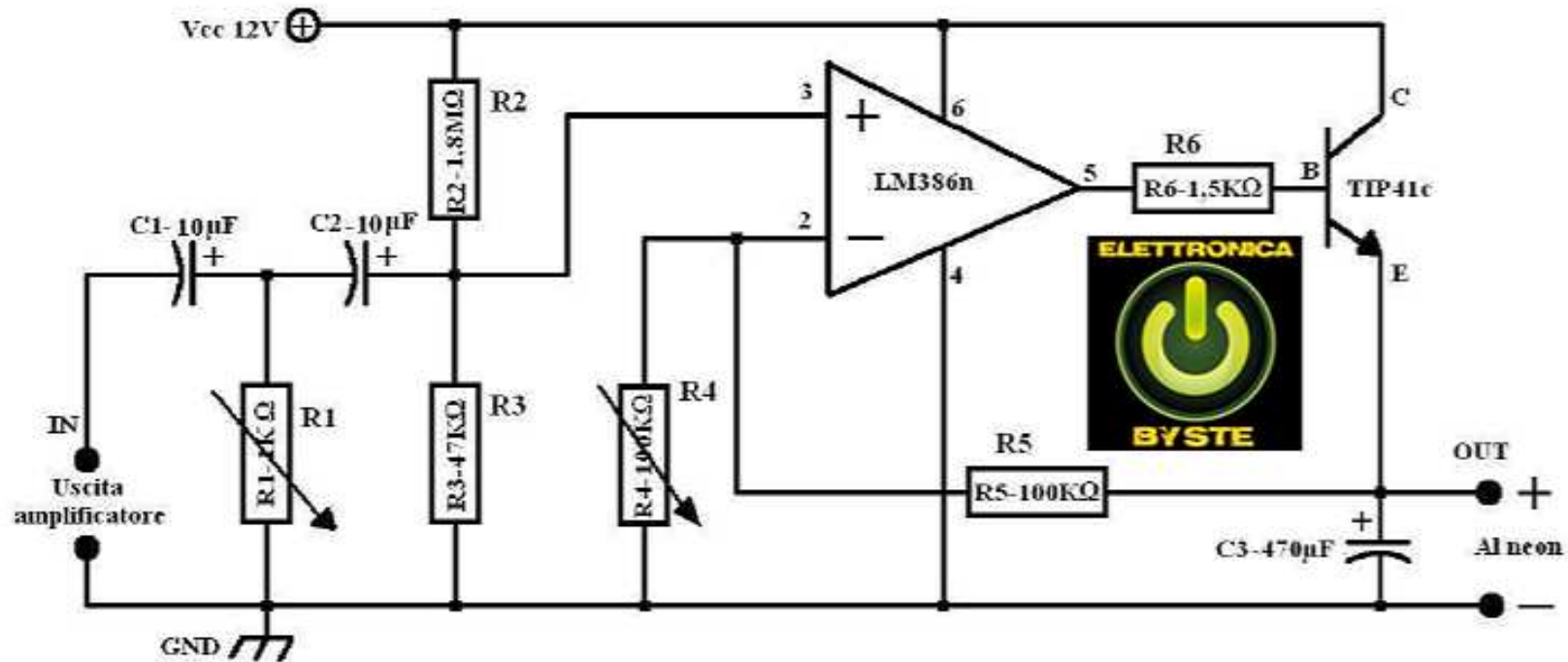


Neon Vu-Meter



R1 - 1K trimmer

R2 - 1,8Mohm

R3 - 47Kohm

R4 - 100K trimmer

R5 - 100Kohm

R6 - 1,5Kohm

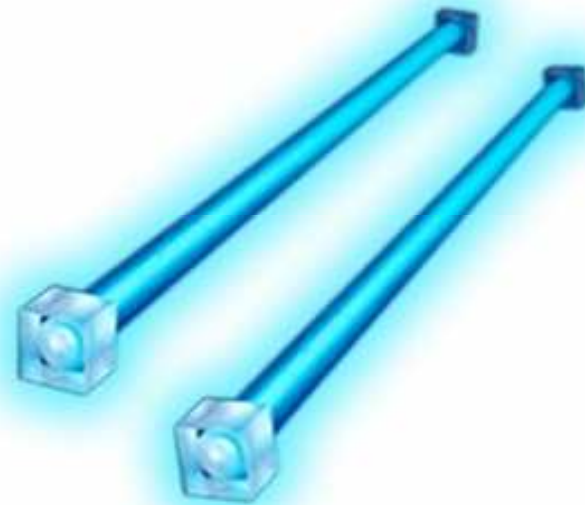
C1 - 10uF 16V

C2 - 10uF 16V

C3 - 470uF 16V

IC1 - LM386n

Tr1 - TIP41c



Usare neon a catodo freddo
(Tipo PC Modding)